



ADAMS

RESIDENTIAL NATIVE GARDEN



BEFORE

A native garden, also called natural landscaping, uses plants, trees and grasses that are suitable for growth in a particular geographical area



AFTER

PROJECT: Installation of a 250 sq. ft. residential native garden.

COST: Project materials cost estimated at \$974

FUNDING: Landowners receive a \$250 Landscaping for Clean Water grant as well as technical assistance provided by the Dakota County Soil and Water Conservation District

PRACTICE:

- Native Garden

BENEFITS:

- Runoff volume reduction
- Slope stabilization
- Improved wildlife habitat
- Opportunity for public education and outreach
- Improved aesthetics

PARTNERS:

- Black Dog Watershed Management Organization

WATERSHED:

- Black Dog

INSTALLATION:

- Summer 2022



BLACK DOG
Watershed Management Organization

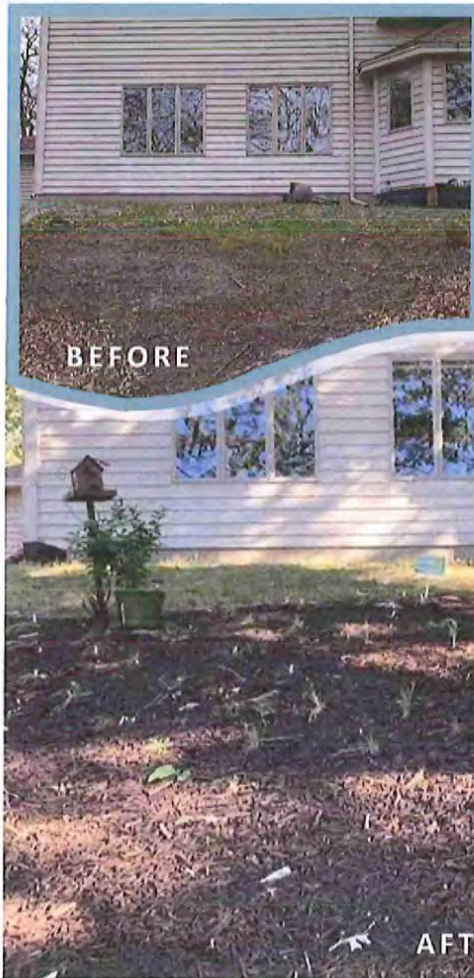
LOCATION:

Woods Trail South
Burnsville





ALLEN RESIDENTIAL NATIVE GARDEN



A native garden, also called natural landscaping, uses plants, trees and grasses that are suitable for growth in a particular geographical area

PRACTICE:

- Native Garden

BENEFITS:

- Runoff volume reduction
- Slope stabilization
- Improved wildlife habitat
- Opportunity for public education and outreach
- Improved aesthetics

PARTNERS:

- Vermillion River Watershed Joint Powers Organization

WATERSHED:

- Vermillion River

INSTALLATION:

- Summer 2022

PROJECT: Installation of a 240 sq. ft. residential native garden.

COST: Project materials cost estimated at \$462

FUNDING: Landowners receive a \$250 Landscaping for Clean Water grant as well as technical assistance provided by the Dakota County Soil and Water Conservation District



LOCATION:

Upper 196th Way W
Lakeville





BERGLUND RESIDENTIAL NATIVE GARDEN



BEFORE

A native garden, also called natural landscaping, uses plants, trees and grasses that are suitable for growth in a particular geographical area



AFTER

PRACTICE:

- Native Garden

BENEFITS:

- Runoff volume reduction
- Slope stabilization
- Improved wildlife habitat
- Opportunity for public education and outreach
- Improved aesthetics

PARTNERS:

- Vermillion River Watershed Joint Powers Organization

WATERSHED:

- Vermillion River

INSTALLATION:

- Summer 2023

PROJECT: Installation of a 173 sq. ft. residential native garden.

COST: Project materials cost estimated at \$250

FUNDING: Landowners receive a \$250 Landscaping for Clean Water grant as well as technical assistance provided by the Dakota County Soil and Water Conservation District



LOCATION:

Emmer Place
Apple Valley





BROWN

RESIDENTIAL NATIVE GARDEN



BEFORE

A native garden, also called natural landscaping, uses plants, trees and grasses that are suitable for growth in a particular geographical area



AFTER

PRACTICE:

- Native Garden

BENEFITS:

- Runoff volume reduction
- Slope stabilization
- Improved wildlife habitat
- Opportunity for public education and outreach
- Improved aesthetics

PARTNERS:

- Black Dog Watershed Management Organization

WATERSHED:

- Black Dog

INSTALLATION:

- Summer 2023

PROJECT: Installation of a 110 sq. ft. residential native garden.

COST: Project materials cost estimated at \$266

FUNDING: Landowners receive a \$250 Landscaping for Clean Water grant as well as technical assistance provided by the Dakota County Soil and Water Conservation District



BLACK DOG
Watershed Management Organization

LOCATION:

Portland Avenue
Burnsville





BRUIHLER NATIVE GARDEN



BEFORE

A native garden, also called natural landscaping, uses plants, trees and grasses that are suitable for growth in a particular geographical area



AFTER

PRACTICE:

- Native Garden

BENEFITS:

- Runoff volume reduction
- Slope stabilization
- Improved wildlife habitat
- Opportunity for public education and outreach
- Improved aesthetics

PARTNERS:

- North Cannon River Watershed Management Organization

WATERSHED:

- North Cannon River

INSTALLATION:

- Summer 2023

PROJECT: Installation of a 1,500 sq. ft. native garden.

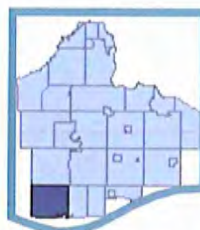
COST: Project materials cost estimated at \$1,576

FUNDING: Landowners receive a \$250 Landscaping for Clean Water grant as well as technical assistance provided by the Dakota County Soil and Water Conservation District

NORTH CANNON RIVER

WATERSHED MANAGEMENT ORGANIZATION

LOCATION: Independence Drive
Greenvale Township



CARLSON RESIDENTIAL NATIVE GARDEN



A native garden, also called natural landscaping, uses plants, trees and grasses that are suitable for growth in a particular geographical area



PROJECT: Installation of a 1,500 sq. ft. residential native garden.

COST: Project materials cost estimated at \$619

FUNDING: Landowners receive a \$250 Landscaping for Clean Water grant as well as technical assistance provided by the Dakota County Soil and Water Conservation District

PRACTICE:

- Native Garden

BENEFITS:

- Runoff volume reduction
- Slope stabilization
- Improved wildlife habitat
- Opportunity for public education and outreach
- Improved aesthetics

PARTNERS:

- Vermillion River Watershed Joint Powers Organization

WATERSHED:

- Vermillion River

INSTALLATION:

- Spring 2023



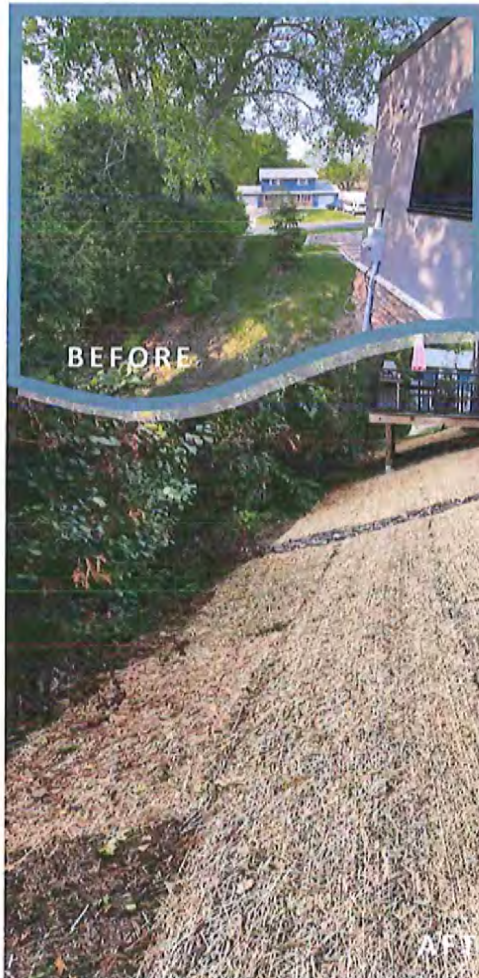
LOCATION:

Dresden Trail
Apple Valley





CHRISTIAN-LARSON RESIDENTIAL NATIVE PLANTING



A native planting also called natural landscaping, uses plants, trees and grasses that are suitable for growth in a particular geographical area

PRACTICE:

- Native Planting

BENEFITS:

- Runoff volume reduction
- Slope stabilization
- Improved wildlife habitat
- Opportunity for public education and outreach
- Improved aesthetics

PARTNERS:

- Black Dog Watershed Management Organization

WATERSHED:

- Black Dog

INSTALLATION:

- Summer 2023

PROJECT: Installation of a 1,608 sq. ft. residential native garden.

COST: Project materials cost estimated at \$580

FUNDING: Landowners receive a \$250 Landscaping for Clean Water grant as well as technical assistance provided by the Dakota County Soil and Water Conservation District



BLACK DOG
Watershed Management Organization

LOCATION:

Nicollet Avenue
Burnsville





CUELLAR

RESIDENTIAL NATIVE GARDEN



BEFORE

A native garden, also called natural landscaping, uses plants, trees and grasses that are suitable for growth in a particular geographical area



AFTER

PRACTICE:

- Native Garden

BENEFITS:

- Runoff volume reduction
- Slope stabilization
- Improved wildlife habitat
- Opportunity for public education and outreach
- Improved aesthetics

PARTNERS:

- Lower Mississippi River Watershed Management Organization

WATERSHED:

- Lower Mississippi River

INSTALLATION:

- Summer 2023

PROJECT: Installation of a 108 sq. ft. residential native garden.

COST: Project materials cost estimated at \$558

FUNDING: Landowners receive a \$250 Landscaping for Clean Water grant as well as technical assistance provided by the Dakota County Soil and Water Conservation District



LOCATION:

Cherry Hill Road
Mendota Heights



DEZIEL

RESIDENTIAL NATIVE GARDEN



BEFORE

A native garden, also called natural landscaping, uses plants, trees and grasses that are suitable for growth in a particular geographical area



AFTER

PROJECT: Installation of a 100 sq. ft. residential native garden.

COST: Project materials cost estimated at \$354

FUNDING: Landowners receive a \$250 Landscaping for Clean Water grant as well as technical assistance provided by the Dakota County Soil and Water Conservation District

PRACTICE:

- Native Garden

BENEFITS:

- Runoff volume reduction
- Slope stabilization
- Improved wildlife habitat
- Opportunity for public education and outreach
- Improved aesthetics

PARTNERS:

- Lower Mississippi River Watershed Management Organization

WATERSHED:

- Lower Mississippi River

INSTALLATION:

- Spring 2022



LOCATION:

West Kraft Road
West St Paul





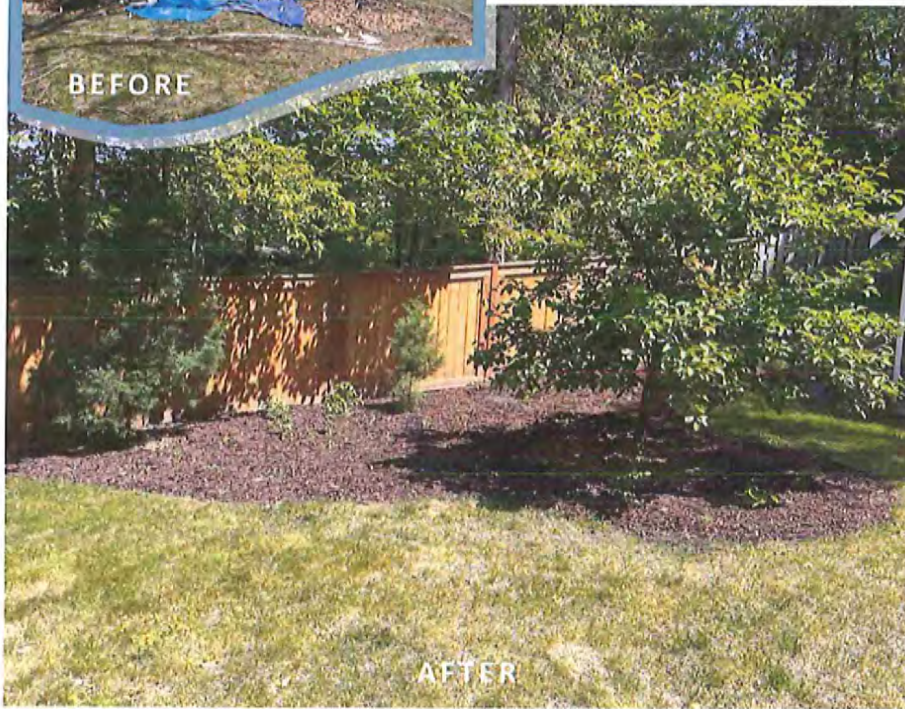
DEZIEL

RESIDENTIAL NATIVE GARDEN



BEFORE

A native garden, also called natural landscaping, uses plants, trees and grasses that are suitable for growth in a particular geographical area



AFTER

PRACTICE:

- Native Garden

BENEFITS:

- Runoff volume reduction
- Slope stabilization
- Improved wildlife habitat
- Opportunity for public education and outreach
- Improved aesthetics

PARTNERS:

- Lower Mississippi River Watershed Management Organization

WATERSHED:

- Lower Mississippi River

INSTALLATION:

- Summer 2023

PROJECT: Installation of a 100 sq. ft. residential native garden.

COST: Project materials cost estimated at \$314

FUNDING: Landowners receive a \$250 Landscaping for Clean Water grant as well as technical assistance provided by the Dakota County Soil and Water Conservation District



LOCATION:

West Kraft Road
West St Paul



DILLMAN

RESIDENTIAL NATIVE GARDEN



BEFORE

A native garden, also called natural landscaping, uses plants, trees and grasses that are suitable for growth in a particular geographical area



AFTER

PROJECT: Installation of a 150 sq. ft. residential native garden.

COST: Project materials cost estimated at \$460

FUNDING: Landowners receive a \$250 Landscaping for Clean Water grant as well as technical assistance provided by the Dakota County Soil and Water Conservation District

PRACTICE:

- Native Garden

BENEFITS:

- Runoff volume reduction
- Slope stabilization
- Improved wildlife habitat
- Opportunity for public education and outreach
- Improved aesthetics

PARTNERS:

- Black Dog Watershed Management Organization

WATERSHED:

- Black Dog

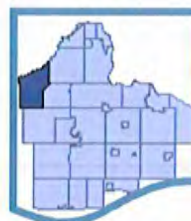
INSTALLATION:

- Spring 2022



LOCATION:

Keller Lake Road
Burnsville





DOBBRATZ

RESIDENTIAL NATIVE GARDEN



BEFORE

A native garden, also called natural landscaping, uses plants, trees and grasses that are suitable for growth in a particular geographical area



AFTER

PRACTICE:

- Native Garden

BENEFITS:

- Runoff volume reduction
- Slope stabilization
- Improved wildlife habitat
- Opportunity for public education and outreach
- Improved aesthetics

PARTNERS:

- Lower Mississippi River Watershed Management Organization

WATERSHED:

- Lower Mississippi River

INSTALLATION:

- Summer 2023

PROJECT: Installation of a 310 sq. ft. residential native garden.

COST: Project materials cost estimated at \$714

FUNDING: Landowners receive a \$250 Landscaping for Clean Water grant as well as technical assistance provided by the Dakota County Soil and Water Conservation District

LOCATION:

21st Avenue North
South St Paul





ELLINGSON RESIDENTIAL NATIVE GARDEN



BEFORE

A native garden, also called natural landscaping, uses plants, trees and grasses that are suitable for growth in a particular geographical area



AFTER

PRACTICE:

- Native Garden

BENEFITS:

- Runoff volume reduction
- Slope stabilization
- Improved wildlife habitat
- Opportunity for public education and outreach
- Improved aesthetics

PARTNERS:

- Vermillion River Watershed Joint Powers Organization

WATERSHED:

- Vermillion River

INSTALLATION:

- Summer 2022

PROJECT: Installation of a 1,400 sq. ft. residential native garden.

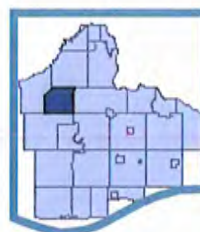
COST: Project materials cost estimated at \$2,393

FUNDING: Landowners receive a \$250 Landscaping for Clean Water grant as well as technical assistance provided by the Dakota County Soil and Water Conservation District



LOCATION:

Flintwood Way
Apple Valley





FRUCI

RESIDENTIAL NATIVE GARDEN



BEFORE

A native garden, also called natural landscaping, uses plants, trees and grasses that are suitable for growth in a particular geographical area



AFTER

PRACTICE:

- Native Garden

BENEFITS:

- Runoff volume reduction
- Slope stabilization
- Improved wildlife habitat
- Opportunity for public education and outreach
- Improved aesthetics

PARTNERS:

- Eagan - Inver Grove Heights Watershed Management Organization

WATERSHED:

- Eagan - Inver Grove Heights

INSTALLATION:

- Summer 2023

PROJECT: Installation of a 460 sq. ft. residential native garden.

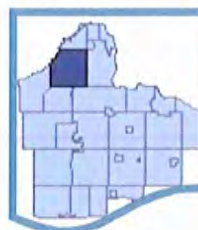
COST: Project materials cost estimated at \$528

FUNDING: Landowners receive a \$250 Landscaping for Clean Water grant as well as technical assistance provided by the Dakota County Soil and Water Conservation District



Eagan - Inver Grove Heights
Watershed Management Organization

LOCATION: West Wind Trail
Eagan



GRANNES

RESIDENTIAL NATIVE GARDEN



A native garden, also called natural landscaping, uses plants, trees and grasses that are suitable for growth in a particular geographical area



PROJECT: Installation of a 350 sq. ft. residential native garden.

COST: Project materials cost estimated at \$716

FUNDING: Landowners receive a \$250 Landscaping for Clean Water grant as well as technical assistance provided by the Dakota County Soil and Water Conservation District

PRACTICE:

- Native Garden

BENEFITS:

- Runoff volume reduction
- Slope stabilization
- Improved wildlife habitat
- Opportunity for public education and outreach
- Improved aesthetics

PARTNERS:

- Black Dog Watershed Management Organization

WATERSHED:

- Black Dog

INSTALLATION:

- Spring 2023



LOCATION:

Baldwin Drive
Apple Valley





HILLIS

RESIDENTIAL NATIVE GARDEN



BEFORE

A native garden, also called natural landscaping, uses plants, trees and grasses that are suitable for growth in a particular geographical area



AFTER

PROJECT: Installation of a 500 sq. ft. residential native garden.

COST: Project materials cost estimated at \$792

FUNDING: Landowners receive a \$250 Landscaping for Clean Water grant as well as technical assistance provided by the Dakota County Soil and Water Conservation District

PRACTICE:

- Native Garden

BENEFITS:

- Runoff volume reduction
- Slope stabilization
- Improved wildlife habitat
- Opportunity for public education and outreach
- Improved aesthetics

PARTNERS:

- Eagan - Inver Grove Heights Watershed Management Organization

WATERSHED:

- Eagan - Inver Grove Heights

INSTALLATION:

- Summer 2023



Eagan - Inver Grove Heights
Watershed Management Organization

LOCATION: Stonewood Road
Eagan





HLAS RESIDENTIAL NATIVE GARDEN



BEFORE

A native garden, also called natural landscaping, uses plants, trees and grasses that are suitable for growth in a particular geographical area



AFTER

PRACTICE:

- Native Garden

BENEFITS:

- Runoff volume reduction
- Slope stabilization
- Improved wildlife habitat
- Opportunity for public education and outreach
- Improved aesthetics

PARTNERS:

- Vermillion River Watershed Joint Powers Organization

WATERSHED:

- Vermillion River

INSTALLATION:

- Summer 2023

PROJECT: Installation of a 178 sq. ft. residential native garden.

COST: Project materials cost estimated at \$742

FUNDING: Landowners receive a \$250 Landscaping for Clean Water grant as well as technical assistance provided by the Dakota County Soil and Water Conservation District



LOCATION:

Harwell Path
Apple Valley





HOEFT RESIDENTIAL NATIVE GARDEN



BEFORE

A native garden, also called natural landscaping, uses plants, trees and grasses that are suitable for growth in a particular geographical area



AFTER

PRACTICE:

- Native Garden

BENEFITS:

- Runoff volume reduction
- Slope stabilization
- Improved wildlife habitat
- Opportunity for public education and outreach
- Improved aesthetics

PARTNERS:

- Vermillion River Watershed Joint Powers Organization

WATERSHED:

- Vermillion River

INSTALLATION:

- Summer 2023

PROJECT: Installation of a 1,000 sq. ft. residential native garden.

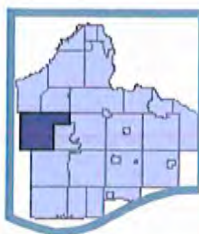
COST: Project materials cost estimated at \$1,510

FUNDING: Landowners receive a \$250 Landscaping for Clean Water grant as well as technical assistance provided by the Dakota County Soil and Water Conservation District



LOCATION:

Italy Path
Lakeville





JENSEN

RESIDENTIAL NATIVE GARDEN



BEFORE

A native garden, also called natural landscaping, uses plants, trees and grasses that are suitable for growth in a particular geographical area



AFTER

PRACTICE:

- Native Garden

BENEFITS:

- Runoff volume reduction
- Slope stabilization
- Improved wildlife habitat
- Opportunity for public education and outreach
- Improved aesthetics

PARTNERS:

- Black Dog Watershed Management Organization

WATERSHED:

- Black Dog

INSTALLATION:

- Summer 2023

PROJECT: Installation of a 400 sq. ft. residential native garden.

COST: Project materials cost estimated at \$1,209

FUNDING: Landowners receive a \$250 Landscaping for Clean Water grant as well as technical assistance provided by the Dakota County Soil and Water Conservation District



BLACK DOG
Watershed Management Organization

LOCATION:

River Hills Drive
Burnsville





KILE RESIDENTIAL NATIVE GARDEN



BEFORE

A native garden, also called natural landscaping, uses plants, trees and grasses that are suitable for growth in a particular geographical area



PRACTICE:

- Native Garden

BENEFITS:

- Runoff volume reduction
- Slope stabilization
- Improved wildlife habitat
- Opportunity for public education and outreach
- Improved aesthetics

PARTNERS:

- Vermillion River Watershed Joint Powers Organization

WATERSHED:

- Vermillion River

INSTALLATION:

- Summer 2023

PROJECT: Installation of a 183 sq. ft. residential native garden.

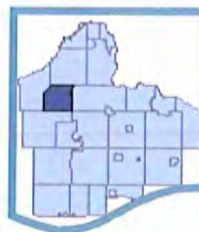
COST: Project materials cost estimated at \$745

FUNDING: Landowners receive a \$250 Landscaping for Clean Water grant as well as technical assistance provided by the Dakota County Soil and Water Conservation District



LOCATION:

132nd Way
Apple Valley





KIRCHNER

RESIDENTIAL NATIVE GARDEN



BEFORE

A native garden, also called natural landscaping, uses plants, trees and grasses that are suitable for growth in a particular geographical area



AFTER

PRACTICE:

- Native Garden

BENEFITS:

- Runoff volume reduction
- Slope stabilization
- Improved wildlife habitat
- Opportunity for public education and outreach
- Improved aesthetics

PARTNERS:

- Lower Mississippi River Watershed Management Organization

WATERSHED:

- Lower Mississippi River

INSTALLATION:

- Summer 2023

PROJECT: Installation of a 400 sq. ft. residential native garden.

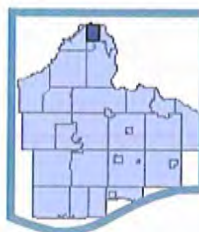
COST: Project materials cost estimated at \$456

FUNDING: Landowners receive a \$250 Landscaping for Clean Water grant as well as technical assistance provided by the Dakota County Soil and Water Conservation District



LOCATION:

918 Bidwell Street
West St Paul





KNUTSEN

RESIDENTIAL NATIVE GARDEN



BEFORE

A native garden, also called natural landscaping, uses plants, trees and grasses that are suitable for growth in a particular geographical area



AFTER

PRACTICE:

- Native Garden

BENEFITS:

- Runoff volume reduction
- Slope stabilization
- Improved wildlife habitat
- Opportunity for public education and outreach
- Improved aesthetics

PARTNERS:

- Black Dog Watershed Management Organization

WATERSHED:

- Black Dog

INSTALLATION:

- Summer 2022

PROJECT: Installation of a 200 sq. ft. residential native garden.

COST: Project materials cost estimated at \$276

FUNDING: Landowners receive a \$250 Landscaping for Clean Water grant as well as technical assistance provided by the Dakota County Soil and Water Conservation District



LOCATION:

161st Street West
Lakeville



KNUTSON

RESIDENTIAL NATIVE GARDEN



BEFORE

A native garden, also called natural landscaping, uses plants, trees and grasses that are suitable for growth in a particular geographical area



AFTER

PROJECT: Installation of a 120 sq. ft. residential native garden.

COST: Project materials cost estimated at \$285

FUNDING: Landowners receive a \$250 Landscaping for Clean Water grant as well as technical assistance provided by the Dakota County Soil and Water Conservation District

PRACTICE:

- Native Garden

BENEFITS:

- Runoff volume reduction
- Slope stabilization
- Improved wildlife habitat
- Opportunity for public education and outreach
- Improved aesthetics

PARTNERS:

- Black Dog Watershed Management Organization

WATERSHED:

- Black Dog

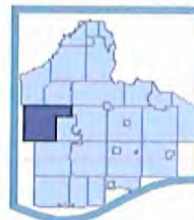
INSTALLATION:

- Spring 2023



LOCATION:

161st St W
Lakeville





KURATA RESIDENTIAL NATIVE GARDEN



BEFORE

A native garden, also called natural landscaping, uses plants, trees and grasses that are suitable for growth in a particular geographical area



AFTER

PRACTICE:

- Native Garden

BENEFITS:

- Runoff volume reduction
- Slope stabilization
- Improved wildlife habitat
- Opportunity for public education and outreach
- Improved aesthetics

PARTNERS:

- Vermillion River Watershed Joint Powers Organization

WATERSHED:

- Vermillion River

INSTALLATION:

- Summer 2022

PROJECT: Installation of a 1,800 sq. ft. residential native garden.

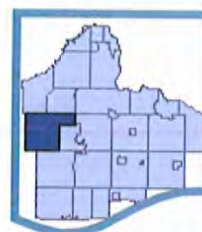
COST: Project materials cost estimated at \$612

FUNDING: Landowners receive a \$250 Landscaping for Clean Water grant as well as technical assistance provided by the Dakota County Soil and Water Conservation District



LOCATION:

Franconia Court
Lakeville





LONG RESIDENTIAL NATIVE GARDEN



BEFORE

A native garden, also called natural landscaping, uses plants, trees and grasses that are suitable for growth in a particular geographical area



AFTER

PRACTICE:

- Native Garden

BENEFITS:

- Runoff volume reduction
- Slope stabilization
- Improved wildlife habitat
- Opportunity for public education and outreach
- Improved aesthetics

PARTNERS:

- Vermillion River Watershed Joint Powers Organization

WATERSHED:

- Vermillion River

INSTALLATION:

- Summer 2023

PROJECT: Installation of a 300 sq. ft. residential native garden.

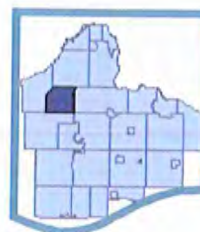
COST: Project materials cost estimated at \$779

FUNDING: Landowners receive a \$250 Landscaping for Clean Water grant as well as technical assistance provided by the Dakota County Soil and Water Conservation District



LOCATION:

140th Street Court
Apple Valley





MATHUR

RESIDENTIAL NATIVE GARDEN



BEFORE

A native garden, also called natural landscaping, uses plants, trees and grasses that are suitable for growth in a particular geographical area



AFTER

PROJECT: Installation of a 120 sq. ft. residential native garden.

COST: Project materials cost estimated at \$800

FUNDING: Landowners receive a \$250 Landscaping for Clean Water grant as well as technical assistance provided by the Dakota County Soil and Water Conservation District

PRACTICE:

- Native Garden

BENEFITS:

- Runoff volume reduction
- Slope stabilization
- Improved wildlife habitat
- Opportunity for public education and outreach
- Improved aesthetics

PARTNERS:

- Egan - Inver Grove Heights Watershed Management Organization

WATERSHED:

- Egan - Inver Grove Heights

INSTALLATION:

- Summer 2022



Egan - Inver Grove Heights
Watershed Management Organization

LOCATION: Deerwood Trail
Egan





McMAHON

RESIDENTIAL NATIVE GARDEN



BEFORE

A native garden, also called natural landscaping, uses plants, trees and grasses that are suitable for growth in a particular geographical area



AFTER

PRACTICE:

- Native Garden

BENEFITS:

- Runoff volume reduction
- Slope stabilization
- Improved wildlife habitat
- Opportunity for public education and outreach
- Improved aesthetics

PARTNERS:

- Eagan - Inver Grove Heights Watershed Management Organization

WATERSHED:

- Eagan - Inver Grove Heights

INSTALLATION:

- Summer 2023

PROJECT: Installation of a 375 sq. ft. residential native garden.

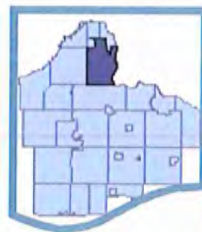
COST: Project materials cost estimated at \$1,059

FUNDING: Landowners receive a \$250 Landscaping for Clean Water grant as well as technical assistance provided by the Dakota County Soil and Water Conservation District



Eagan - Inver Grove Heights
Watershed Management Organization

LOCATION: Archer Trail
Inver Grove Heights





MILLER RESIDENTIAL NATIVE GARDEN



BEFORE

A native garden, also called natural landscaping, uses plants, trees and grasses that are suitable for growth in a particular geographical area



AFTER

PRACTICE:

- Native Garden

BENEFITS:

- Runoff volume reduction
- Slope stabilization
- Improved wildlife habitat
- Opportunity for public education and outreach
- Improved aesthetics

PARTNERS:

- Vermillion River Watershed Joint Powers Organization

WATERSHED:

- Vermillion River

INSTALLATION:

- Summer 2022

PROJECT: Installation of a 118 sq. ft. residential native garden.

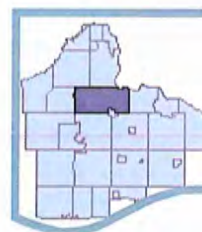
COST: Project materials cost estimated at \$323

FUNDING: Landowners receive a \$250 Landscaping for Clean Water grant as well as technical assistance provided by the Dakota County Soil and Water Conservation District



LOCATION:

Ardroe Avenue
Rosemount





MORYN

RESIDENTIAL NATIVE GARDEN



BEFORE

A native garden, also called natural landscaping, uses plants, trees and grasses that are suitable for growth in a particular geographical area



AFTER

PRACTICE:

- Native Garden

BENEFITS:

- Runoff volume reduction
- Slope stabilization
- Improved wildlife habitat
- Opportunity for public education and outreach
- Improved aesthetics

PARTNERS:

- Lower Mississippi River Watershed Management Organization

WATERSHED:

- Lower Mississippi River

INSTALLATION:

- Spring 2022

PROJECT: Installation of a 200 sq. ft. residential native garden.

COST: Project materials cost estimated at \$528

FUNDING: Landowners receive a \$250 Landscaping for Clean Water grant as well as technical assistance provided by the Dakota County Soil and Water Conservation District



LOCATION:

Old Concord Blvd
Inver Grove Heights





PEITSO

RESIDENTIAL NATIVE GARDEN



BEFORE

A native garden, also called natural landscaping, uses plants, trees and grasses that are suitable for growth in a particular geographical area



AFTER

PRACTICE:

- Native Garden

BENEFITS:

- Runoff volume reduction
- Slope stabilization
- Improved wildlife habitat
- Opportunity for public education and outreach
- Improved aesthetics

PARTNERS:

- Lower Mississippi River Watershed Management Organization

WATERSHED:

- Lower Mississippi River

INSTALLATION:

- Summer 2023

PROJECT: Installation of a 100 sq. ft. residential native garden.

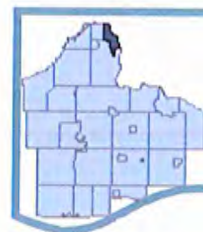
COST: Project materials cost estimated at \$470

FUNDING: Landowners receive a \$250 Landscaping for Clean Water grant as well as technical assistance provided by the Dakota County Soil and Water Conservation District



LOCATION:

20th Avenue North
South St Paul





POPPINGA

RESIDENTIAL NATIVE GARDEN



BEFORE

A native garden, also called natural landscaping, uses plants, trees and grasses that are suitable for growth in a particular geographical area



AFTER

PRACTICE:

- Native Garden

BENEFITS:

- Runoff volume reduction
- Slope stabilization
- Improved wildlife habitat
- Opportunity for public education and outreach
- Improved aesthetics

PARTNERS:

- Lower Mississippi River Watershed Management Organization

WATERSHED:

- Lower Mississippi River

INSTALLATION:

- Summer 2023

PROJECT: Installation of a 120 sq. ft. residential native garden.

COST: Project materials cost estimated at \$466

FUNDING: Landowners receive a \$250 Landscaping for Clean Water grant as well as technical assistance provided by the Dakota County Soil and Water Conservation District



LOCATION:

Tyne Lane
Inver Grove Heights





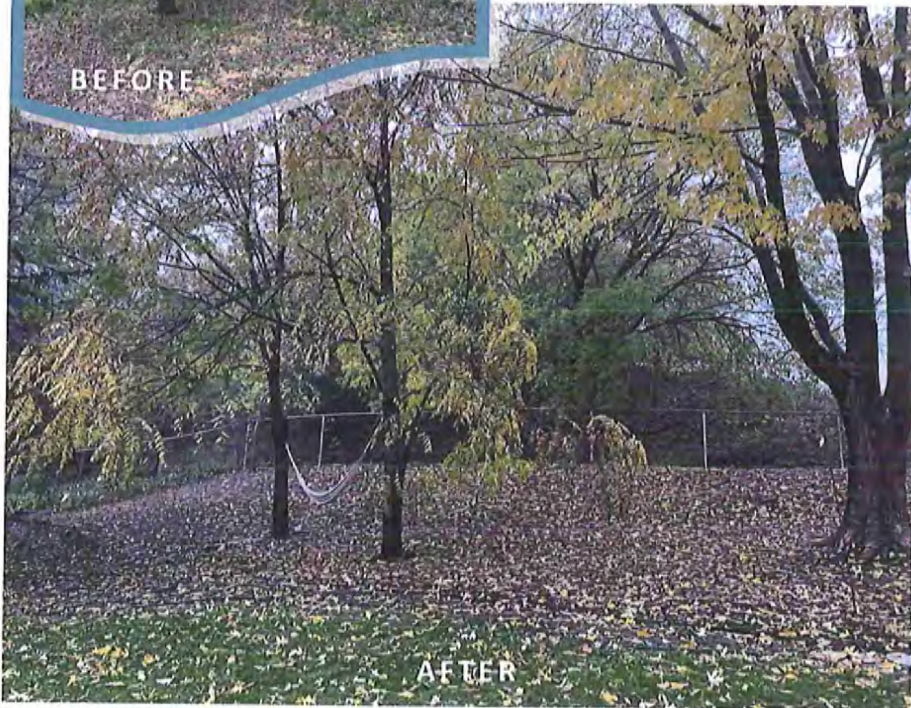
QUINN

RESIDENTIAL NATIVE GARDEN



BEFORE

A native garden, also called natural landscaping, uses plants, trees and grasses that are suitable for growth in a particular geographical area



AFTER

PRACTICE:

- Native Garden

BENEFITS:

- Runoff volume reduction
- Slope stabilization
- Improved wildlife habitat
- Opportunity for public education and outreach
- Improved aesthetics

PARTNERS:

- Black Dog Watershed Management Organization

WATERSHED:

- Black Dog

INSTALLATION:

- Summer 2023

PROJECT: Installation of a 3,500 sq. ft. residential native garden.

COST: Project materials cost estimated at \$4,564

FUNDING: Landowners receive a \$250 Landscaping for Clean Water grant as well as technical assistance provided by the Dakota County Soil and Water Conservation District



BLACK DOG
Watershed Management Organization

LOCATION:

Apple View Lane
Burnsville





SMITH

RESIDENTIAL NATIVE GARDEN



BEFORE

A native garden, also called natural landscaping, uses plants, trees and grasses that are suitable for growth in a particular geographical area



AFTER

PRACTICE:

- Native Garden

BENEFITS:

- Runoff volume reduction
- Slope stabilization
- Improved wildlife habitat
- Opportunity for public education and outreach
- Improved aesthetics

PARTNERS:

- Lower Mississippi River Watershed Management Organization

WATERSHED:

- Lower Mississippi River

INSTALLATION:

- Summer 2022

PROJECT: Installation of a 100 sq. ft. residential native garden.

COST: Project materials cost estimated at \$300

FUNDING: Landowners receive a \$250 Landscaping for Clean Water grant as well as technical assistance provided by the Dakota County Soil and Water Conservation District



LOCATION:

Coventry Court
Mendota Heights





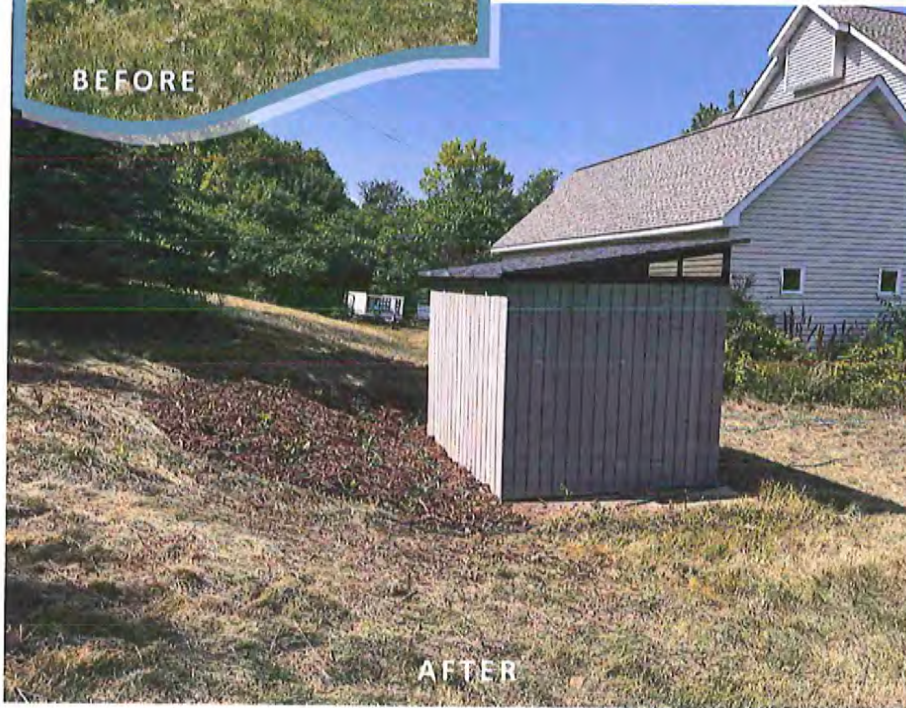
THEISEN

RESIDENTIAL NATIVE GARDEN



BEFORE

A native garden, also called natural landscaping, uses plants, trees and grasses that are suitable for growth in a particular geographical area



AFTER

PRACTICE:

- Native Garden

BENEFITS:

- Runoff volume reduction
- Slope stabilization
- Improved wildlife habitat
- Opportunity for public education and outreach
- Improved aesthetics

PARTNERS:

- Eagan - Inver Grove Heights Watershed Management Organization

WATERSHED:

- Eagan - Inver Grove Heights

INSTALLATION:

- Summer 2023

PROJECT: Installation of a 160 sq. ft. residential native garden.

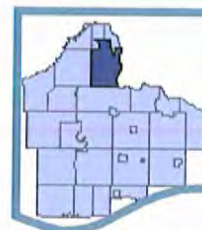
COST: Project materials cost estimated at \$272

FUNDING: Landowners receive a \$250 Landscaping for Clean Water grant as well as technical assistance provided by the Dakota County Soil and Water Conservation District



Eagan - Inver Grove Heights
Watershed Management Organization

LOCATION: 82nd Street East
Inver Grove Heights





TONKIN

RESIDENTIAL NATIVE GARDEN



BEFORE

A native garden, also called natural landscaping, uses plants, trees and grasses that are suitable for growth in a particular geographical area



AFTER

PRACTICE:

- Native Garden

BENEFITS:

- Runoff volume reduction
- Slope stabilization
- Improved wildlife habitat
- Opportunity for public education and outreach
- Improved aesthetics

PARTNERS:

- Black Dog Watershed Management Organization

WATERSHED:

- Black Dog

INSTALLATION:

- Summer 2023

PROJECT: Installation of a 840 sq. ft. residential native garden.

COST: Project materials cost estimated at \$1,144

FUNDING: Landowners receive a \$250 Landscaping for Clean Water grant as well as technical assistance provided by the Dakota County Soil and Water Conservation District



LOCATION:

Wildwood Court
Burnsville





WALKER-ANDERSON RESIDENTIAL NATIVE GARDEN



A native garden, also called natural landscaping, uses plants, trees and grasses that are suitable for growth in a particular geographical area



PRACTICE:

- Native Garden

BENEFITS:

- Runoff volume reduction
- Slope stabilization
- Improved wildlife habitat
- Opportunity for public education and outreach
- Improved aesthetics

PARTNERS:

- Black Dog Watershed Management Organization

WATERSHED:

- Black Dog

INSTALLATION:

- Summer 2022

PROJECT: Installation of a 250 sq. ft. residential native garden.

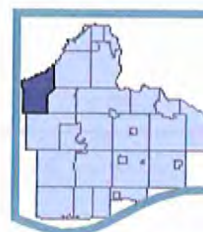
COST: Project materials cost estimated at \$343

FUNDING: Landowners receive a \$250 Landscaping for Clean Water grant as well as technical assistance provided by the Dakota County Soil and Water Conservation District



LOCATION:

Judicial Road
Burnsville



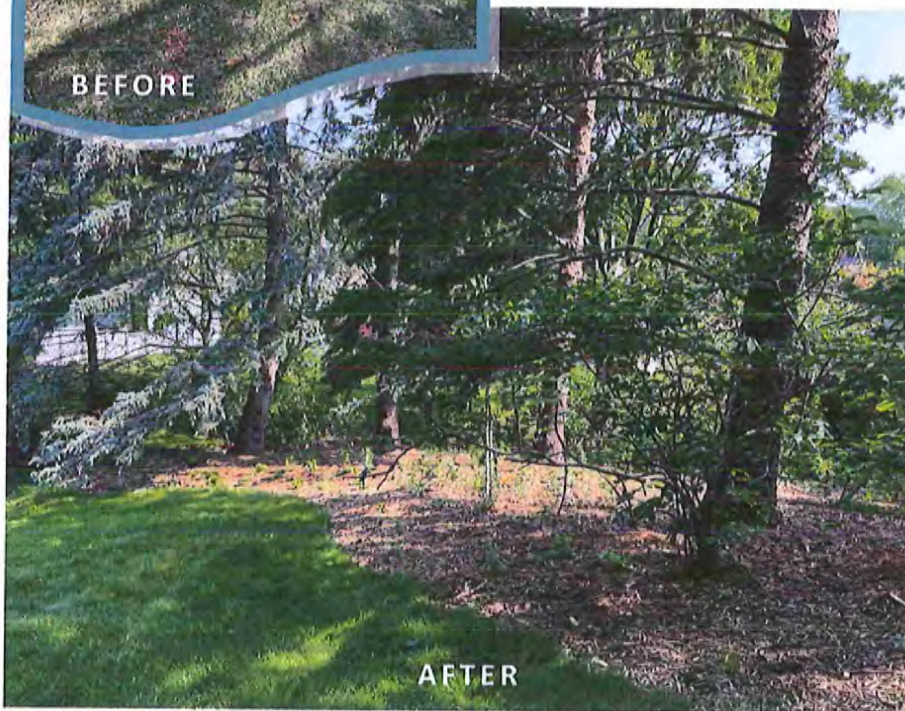


WEHRENBURG RESIDENTIAL NATIVE GARDEN



BEFORE

A native garden, also called natural landscaping, uses plants, trees and grasses that are suitable for growth in a particular geographical area



AFTER

PRACTICE:

- Native Garden

BENEFITS:

- Runoff volume reduction
- Slope stabilization
- Improved wildlife habitat
- Opportunity for public education and outreach
- Improved aesthetics

PARTNERS:

- Vermillion River Watershed Joint Powers Organization

WATERSHED:

- Vermillion River

INSTALLATION:

- Summer 2023

PROJECT: Installation of a 300 sq. ft. residential native garden.

COST: Project materials cost estimated at \$1,500

FUNDING: Landowners receive a \$250 Landscaping for Clean Water grant as well as technical assistance provided by the Dakota County Soil and Water Conservation District



LOCATION:

Hershey Court
Apple Valley





ZATOR

RESIDENTIAL NATIVE GARDEN



BEFORE

A native garden, also called natural landscaping, uses plants, trees and grasses that are suitable for growth in a particular geographical area



AFTER

PRACTICE:

- Native Garden

BENEFITS:

- Runoff volume reduction
- Slope stabilization
- Improved wildlife habitat
- Opportunity for public education and outreach
- Improved aesthetics

PARTNERS:

- Black Dog Watershed Management Organization

WATERSHED:

- Black Dog

INSTALLATION:

- Summer 2023

PROJECT: Installation of a 300 sq. ft. residential native garden.

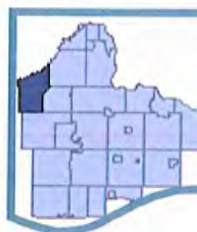
COST: Project materials cost estimated at \$682

FUNDING: Landowners receive a \$250 Landscaping for Clean Water grant as well as technical assistance provided by the Dakota County Soil and Water Conservation District



LOCATION:

Crater Court
Burnsville





ZELLMER RESIDENTIAL NATIVE GARDEN



BEFORE

A native garden, also called natural landscaping, uses plants, trees and grasses that are suitable for growth in a particular geographical area



AFTER

PRACTICE:

- Native Garden

BENEFITS:

- Runoff volume reduction
- Slope stabilization
- Improved wildlife habitat
- Opportunity for public education and outreach
- Improved aesthetics

PARTNERS:

- Vermillion River Watershed Joint Powers Organization

WATERSHED:

- Vermillion River

INSTALLATION:

- Summer 2023

PROJECT: Installation of a 250 sq. ft. residential native garden.

COST: Project materials cost estimated at \$1,282

FUNDING: Landowners receive a \$250 Landscaping for Clean Water grant as well as technical assistance provided by the Dakota County Soil and Water Conservation District



LOCATION:

Goodview Trail
Lakeville

