



DILLMAN

NATIVE SHORELINE PLANTING



BEFORE

A native shoreline planting is the use of native vegetation to protect a shoreline from existing or potential erosion.



AFTER

PRACTICE:

- Native Shoreline Planting

BENEFITS:

- Shoreline stabilization and erosion reduction
- Improved water quality
- Improved wildlife habitat
- Opportunity for public education and outreach
- Improved aesthetics

PARTNERS:

- Black Dog Watershed Management Organization

WATERSHED:

- Black Dog

INSTALLATION:

- Summer 2020

PROJECT: Installation of a 300 square foot Native Shoreline Planting

COST: Project materials cost estimated at \$264

FUNDING: Landowners receive a \$250 Landscaping for Clean Water grant as well as technical assistance provided by the Dakota County Soil and Water Conservation District

LOCATION:

Keller Lake Road
Burnsville



Black Dog
Watershed Management Organization

HANDLEY NATIVE SHORELINE PLANTING



BEFORE

A native shoreline planting is the use of native vegetation to protect a shoreline from existing or potential erosion



AFTER

PROJECT: Installation of a 320 square foot shoreline planting

COST: Project materials cost estimated at \$2,800

FUNDING: Landowners receive a \$250 Landscaping for Clean Water grant as well as technical assistance provided by the Dakota County Soil and Water Conservation District

PRACTICE:

- Native Shoreline Planting

BENEFITS:

- Shoreline stabilization and erosion reduction
- Improved water quality
- Improved wildlife habitat
- Opportunity for public education and outreach
- Improved aesthetics

PARTNERS:

- Vermillion River Watershed Joint Powers Board

WATERSHED:

- Vermillion River

INSTALLATION:

- Summer 2022



LOCATION:

Holyoke Path
Apple Valley





RUVELSON

NATIVE SHORELINE PLANTING



BEFORE

A native garden, also called natural landscaping, uses plants, trees and grasses that are suitable for growth in a particular geographical area



AFTER

PRACTICE:

- Native Garden

BENEFITS:

- Runoff volume reduction
- Slope stabilization
- Improved wildlife habitat
- Opportunity for public education and outreach
- Improved aesthetics

PARTNERS:

- Lower Mississippi River Watershed Management Organization

WATERSHED:

- Lower Mississippi River

INSTALLATION:

- Summer 2020

PROJECT: Installation of a 625 sq. ft. residential native garden.

COST: Project materials cost estimated at \$1,000

FUNDING: Landowners receive a \$250 Landscaping for Clean Water grant as well as technical assistance provided by the Dakota County Soil and Water Conservation District



LOCATION:

West Kraft Road
West St Paul





DILLMAN

NATIVE SHORELINE PLANTING



A native shoreline planting is the use of native vegetation to protect a shoreline from existing or potential erosion.



PRACTICE:

- Native Shoreline Planting

BENEFITS:

- Shoreline stabilization and erosion reduction
- Improved water quality
- Improved wildlife habitat
- Opportunity for public education and outreach
- Improved aesthetics

PARTNERS:

- Black Dog Watershed Management Organization

WATERSHED:

- Black Dog

INSTALLATION:

- Summer 2021

PROJECT: Installation of a 620 square foot Native Shoreline Planting

COST: Project materials cost estimated at \$1,096

FUNDING: Landowners receive a \$250 Landscaping for Clean Water grant as well as technical assistance provided by the Dakota County Soil and Water Conservation District

LOCATION:

Keller Lake Road
Burnsville



Black Dog
Watershed Management Organization



HANDLEY NATIVE SHORELINE PLANTING



BEFORE

A native shoreline planting is the use of native vegetation to protect a shoreline from existing or potential erosion.



AFTER

PROJECT: Installation of a 320 square foot shoreline planting

COST: Project materials cost estimated at \$2,800

FUNDING: Landowners receive a \$250 Landscaping for Clean Water grant as well as technical assistance provided by the Dakota County Soil and Water Conservation District

PRACTICE:

- Native Shoreline Planting

BENEFITS:

- Shoreline stabilization and erosion reduction
- Improved water quality
- Improved wildlife habitat
- Opportunity for public education and outreach
- Improved aesthetics

PARTNERS:

- Vermillion River Watershed Joint Powers Board

WATERSHED:

- Vermillion River

INSTALLATION:

- Summer 2023



LOCATION:

Holyoke Path
Apple Valley





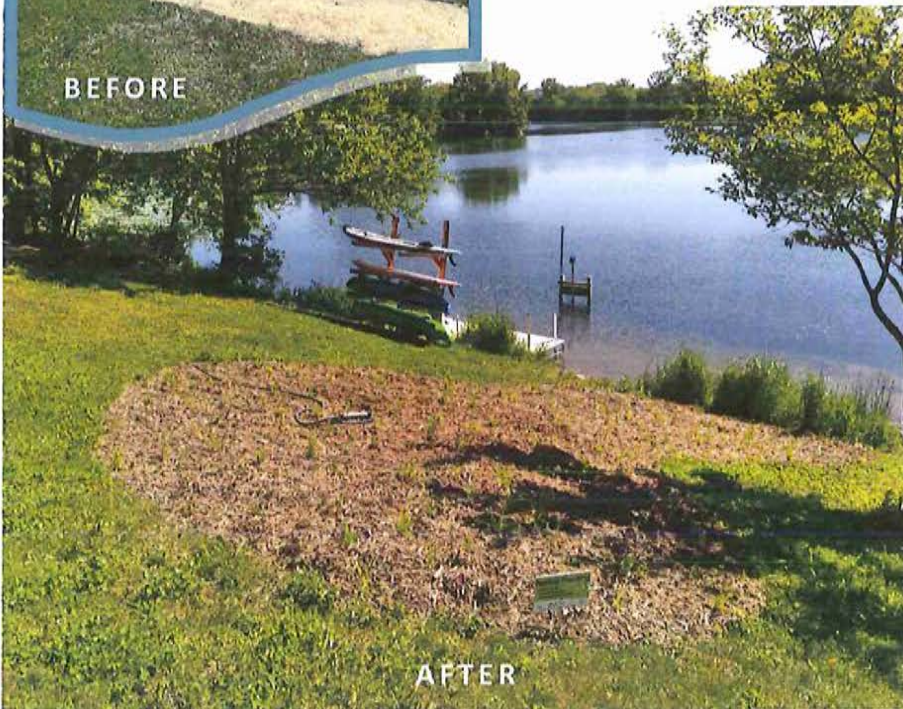
HENNINGSON

RESIDENTIAL NATIVE PLANTING



BEFORE

A native planting, also called natural landscaping, uses plants, trees and grasses that are suitable for growth in a particular geographical area



AFTER

PROJECT: Installation of a 500 sq. ft. residential native garden.

COST: Project materials cost estimated at \$2,360

FUNDING: Landowners receive a \$250 Landscaping for Clean Water grant as well as technical assistance provided by the Dakota County Soil and Water Conservation District

PRACTICE:

- Native Planting

BENEFITS:

- Runoff volume reduction
- Slope stabilization
- Improved wildlife habitat
- Opportunity for public education and outreach
- Improved aesthetics

PARTNERS:

- Black Dog Watershed Management Organization

WATERSHED:

- Black Dog

INSTALLATION:

- Summer 2021

Black Dog
Watershed Management Organization

LOCATION:

Kenosha Ave
Burnsville





NAJJAR

RESIDENTIAL NATIVE PLANTING



BEFORE

A native planting, also called natural landscaping, uses plants, trees and grasses that are suitable for growth in a particular geographical area



AFTER

PROJECT: Installation of a 2,500 sq. ft. residential native planting

COST: Project materials cost estimated at \$2,200

FUNDING: Landowners receive a \$250 Landscaping for Clean Water grant as well as technical assistance provided by the Dakota County Soil and Water Conservation District

PRACTICE:

- Native Planting

BENEFITS:

- Runoff volume reduction
- Slope stabilization
- Improved wildlife habitat
- Opportunity for public education and outreach
- Improved aesthetics

PARTNERS:

- Lower Mississippi River Watershed Management Organization

WATERSHED:

- Lower Mississippi River

INSTALLATION:

- Summer 2021



LOCATION:

Bridgeview Court
Mendota Heights



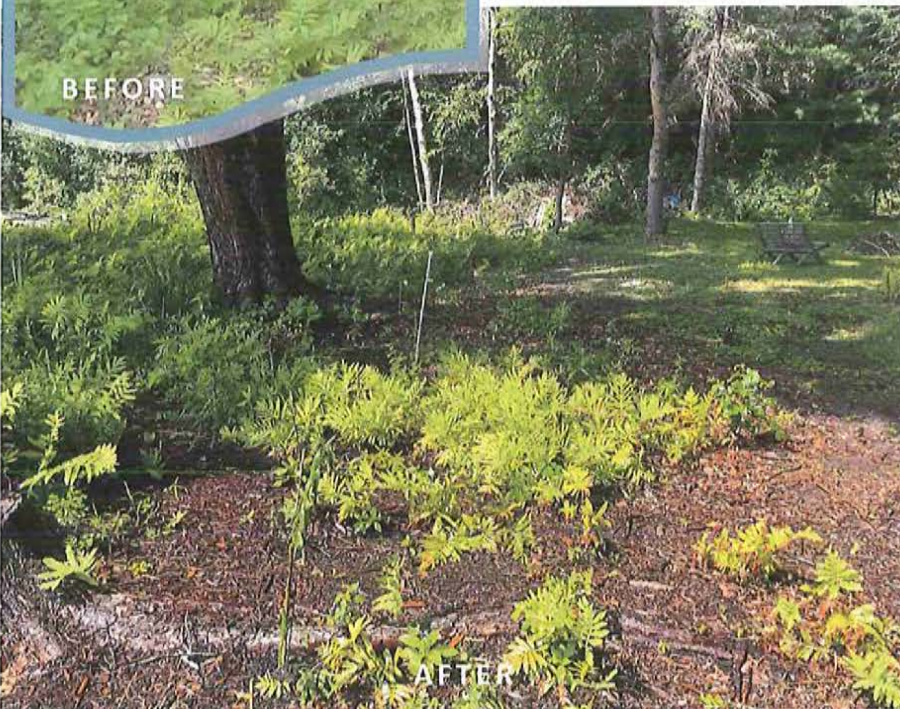


RUVELSON SHORELINE PLANTING



BEFORE

A native shoreline planting is the use of native vegetation to protect a shoreline from existing or potential erosion



AFTER

PROJECT: Installation of a 375 square foot native shoreline planting.

COST: Project materials cost estimated at \$600

FUNDING: Landowners receive a \$250 Landscaping for Clean Water grant as well as technical assistance provided by the Dakota County Soil and Water Conservation District

PRACTICE:

- Shoreline Planting

BENEFITS:

- Shoreline stabilization and erosion reduction
- Improved water quality
- Improved wildlife habitat
- Opportunity for public education and outreach
- Improved aesthetics

PARTNERS:

- Lower Mississippi River Watershed Management Organization

WATERSHED:

- Lower Mississippi River

INSTALLATION:

- Summer 2021



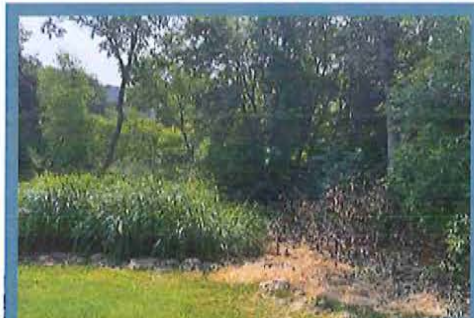
LOCATION:
Kraft Road West
West St Paul





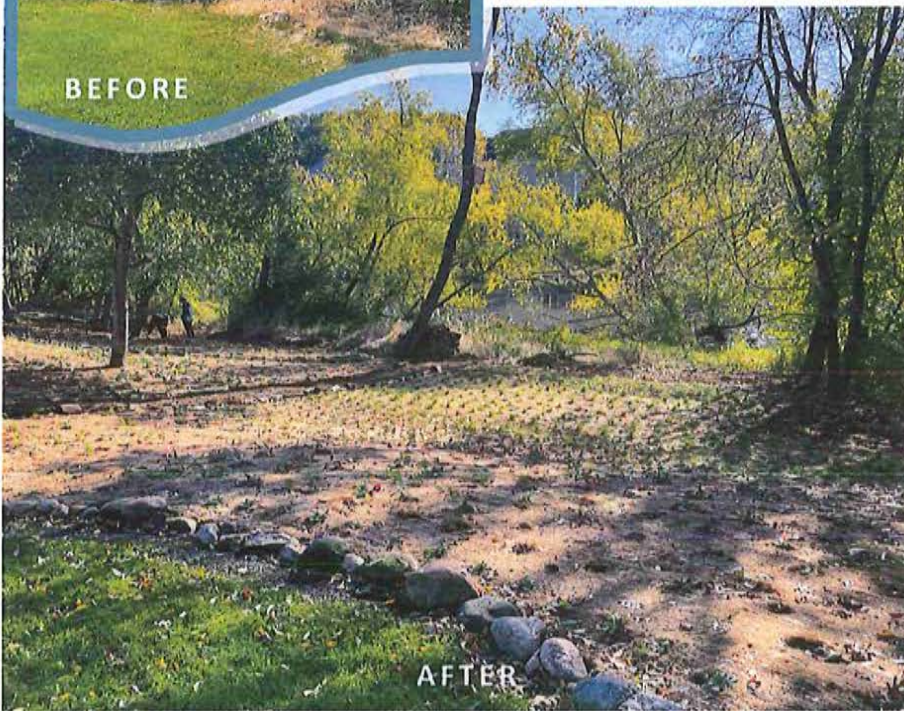
WIER

RESIDENTIAL NATIVE PLANTING



BEFORE

A native planting, also called natural landscaping, uses plants, trees and grasses that are suitable for growth in a particular geographical area



AFTER

PRACTICE:

- Native Planting

BENEFITS:

- Runoff volume reduction
- Slope stabilization
- Improved wildlife habitat
- Opportunity for public education and outreach
- Improved aesthetics

PARTNERS:

- Lower Mississippi River Watershed Management Organization

WATERSHED:

- Lower Mississippi River

INSTALLATION:

- Summer 2021

PROJECT: Installation of a 1,750 sq. ft. residential native planting

COST: Project materials cost estimated at \$1,950

FUNDING: Landowners receive a \$250 Landscaping for Clean Water grant as well as technical assistance provided by the Dakota County Soil and Water Conservation District



LOCATION:

Bridgeview Court
Mendota Heights





OAKMAN NATIVE SHORELINE PLANTING



BEFORE

A native shoreline planting is the use of native vegetation to protect a shoreline from existing or potential erosion.



AFTER

PROJECT: Installation of a 400 square foot native shoreline planting

COST: Project materials cost estimated at \$910

FUNDING: Landowners receive a \$250 Landscaping for Clean Water grant as well as technical assistance provided by the Dakota County Soil and Water Conservation District

PRACTICE:

- Native Shoreline Planting

BENEFITS:

- Runoff volume reduction
- Improved water quality
- Improved wildlife habitat
- Opportunity for public education and outreach
- Improved aesthetics

PARTNERS:

- Lower Mississippi River Watershed Management Organization

WATERSHED:

- Lower Mississippi River

INSTALLATION:

- Summer 2023



LOCATION:
60th Street West
Sunfish Lake

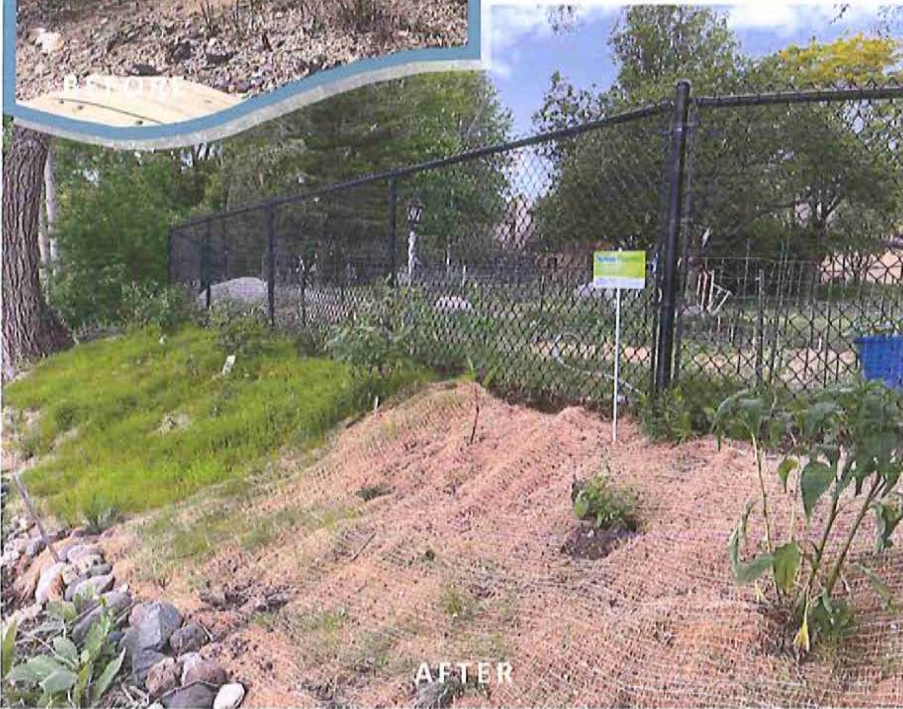




CONGDON NATIVE SHORELINE PLANTING



A native shoreline planting is the use of native vegetation to protect a shoreline from existing or potential erosion.



AFTER

PROJECT: Installation of a 360 square foot Native Shoreline Planting

COST: Project materials cost estimated at \$457

FUNDING: Landowners receive a \$250 Landscaping for Clean Water grant as well as technical assistance provided by the Dakota County Soil and Water Conservation District

PRACTICE:

- Native Shoreline Planting

BENEFITS:

- Shoreline stabilization and erosion reduction
- Improved water quality
- Improved wildlife habitat
- Opportunity for public education and outreach
- Improved aesthetics

PARTNERS:

- Black Dog Watershed Management Organization

WATERSHED:

- Black Dog

INSTALLATION:

- Summer 2023



BLACK DOG
Watershed Management Organization

LOCATION:

Highview Drive
Apple Valley

