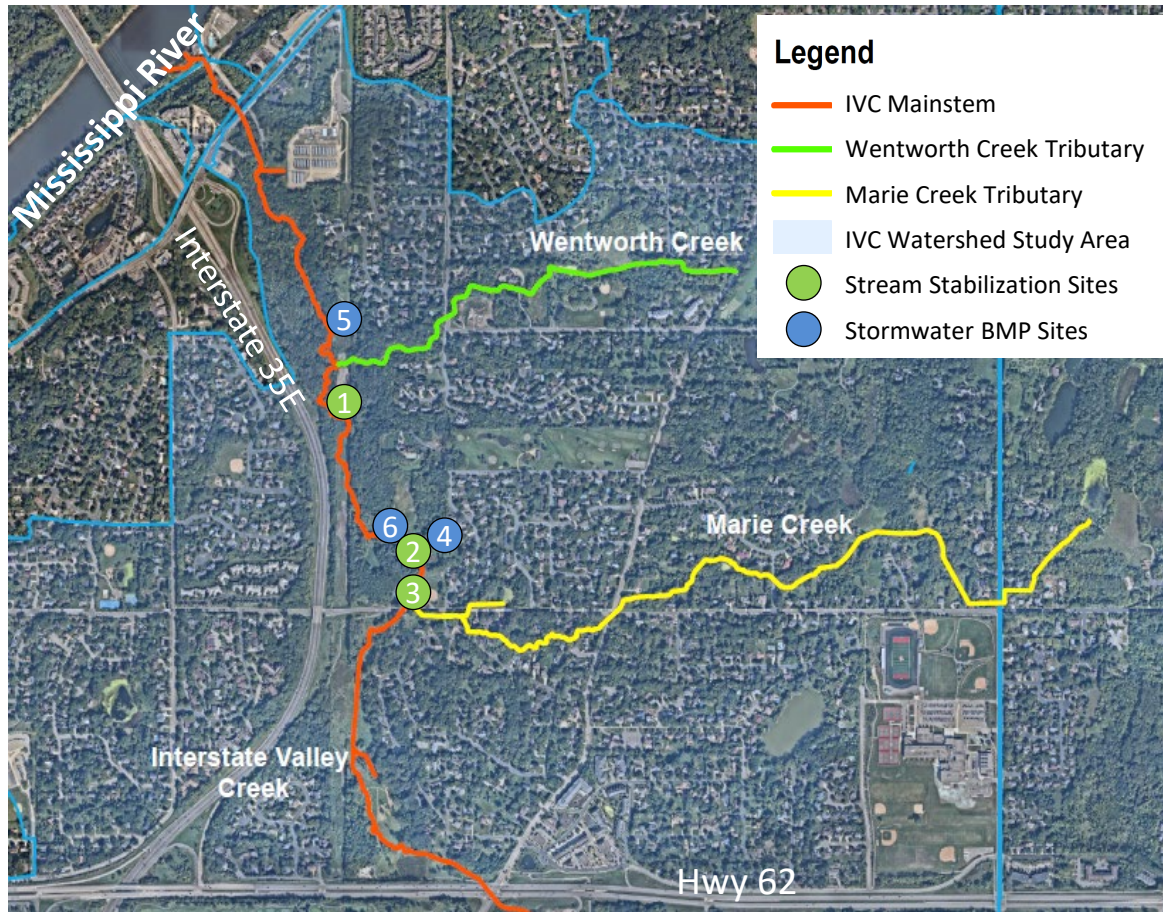


Interstate Valley Creek (IVC) Prioritized Stabilization & Stormwater BMP Projects



Site 1 – Eroding banks up to 14 feet in height



Site 3 – Eroding banks near Valley Park playground

Interstate Valley Creek Prioritized Stabilization Project Pollutant Reductions

| Map # | Location | TSS Reduction (ton/yr) | TP Reduction (lbs/yr) |
|-------|------------------------------|------------------------|-----------------------|
| 1 | Valley Park RTR to Wentworth | 158.7 | 135.0 |
| 2 | Valley Park Wetland | 74.9 | 85.2 |
| 3 | Valley Park Playground | 48.3 | 41.1 |

Interstate Valley Creek Prioritized BMP Project Pollutant Reductions

| Map # | Location | Rate Reduction (CFS - 2 yr) | Rate Reduction (CFS - 2 yr) | TSS Reduction (ton/yr) | TP Reduction (lbs/yr) |
|-------|------------------------------|-----------------------------|-----------------------------|------------------------|-----------------------|
| 4 | Valley Park RTR to Wentworth | 10.9 | 12.6 | 1.2 | 4.7 |
| 5 | Valley Park Wetland | 3.4 | 5.7 | 0.9 | 3.5 |
| 6 | Valley Park Playground | 10.4 | 12.4 | 0.2 | 0.8 |

